

Alaska Department of Fish and Game

Habitat Section
Southeast Region



109-42-10010-2002-3001

CORRECTION

Water body name:

Quad: Sitka A-1

Upper Reach Latitude: 57.018278 **Longitude:** -133.996178

Lower Reach Latitude: 57.016482 **Longitude:** -134.012548

Findings: We surveyed the road crossing of this cataloged stream using a GPS and found that the stream path is incorrectly mapped. We recommend correcting the route of the stream to reflect the route identified by a LiDAR model of streams around Kake (Table 1; Figure 1).

Recommendations: Correct Stream No. 109-42-10010-2002-3001 in the anadromous waters catalog to reflect the field verified stream path (Figure 1).

Nomination: Pending

Survey date: 6/10/2023

Species & Lifestage: CO

Survey crew: CD, FC

Table 1.—109-42-10010-2002-3001 survey data.

Waypoint	Latitude	Longitude	Notes	Stream Width ft	Stream Substrate	Habitat Features	Gradient %	Sample Effort	Sample Results
227	57.017250	-134.015509	May want to correct route of tributary to follow LiDAR/imagery.						

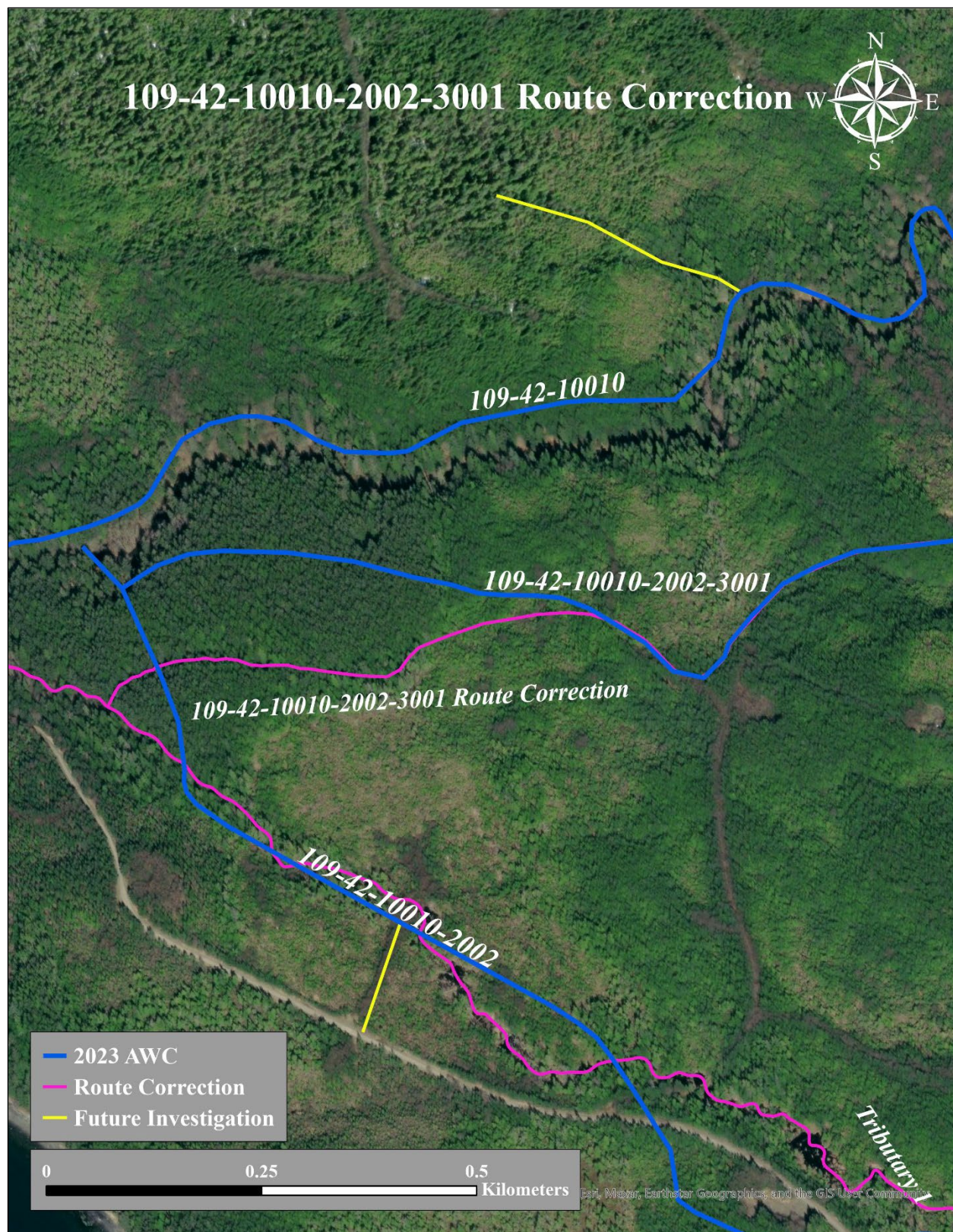


Figure 1.—109-42-10010-2002-3001 route correction map.